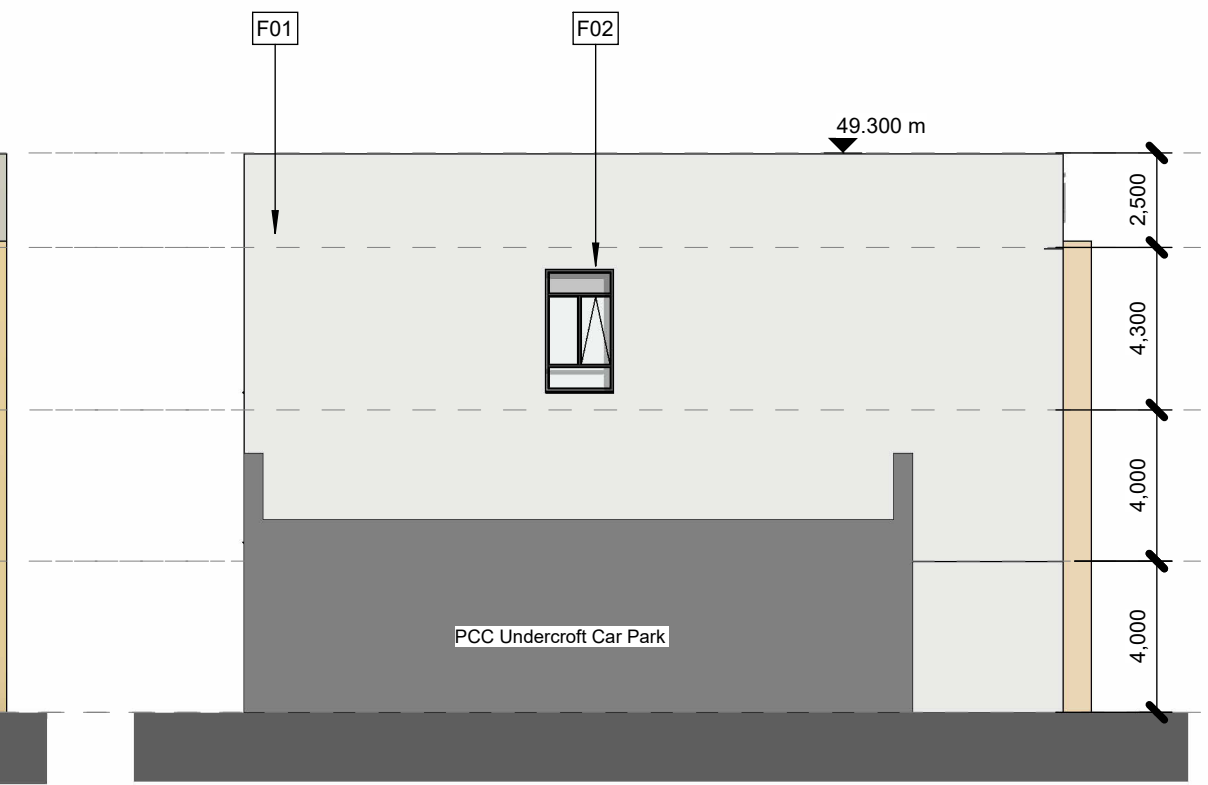
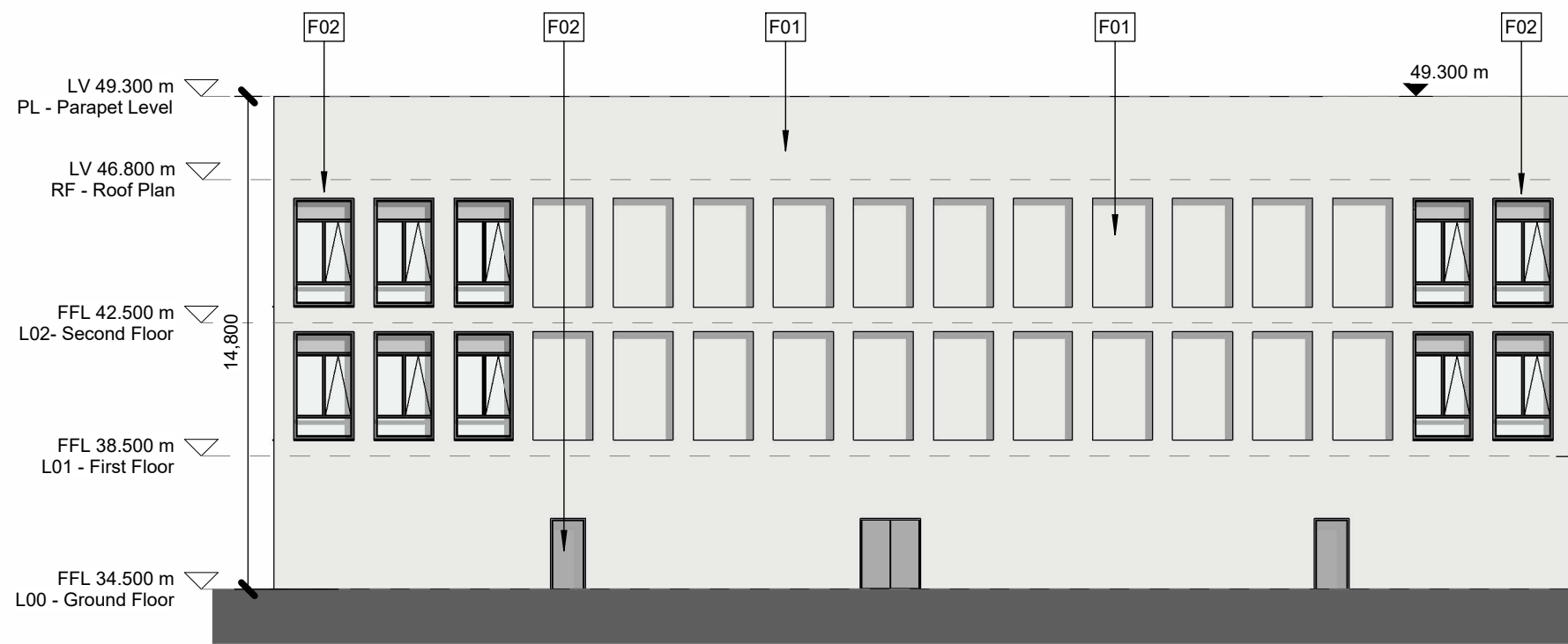


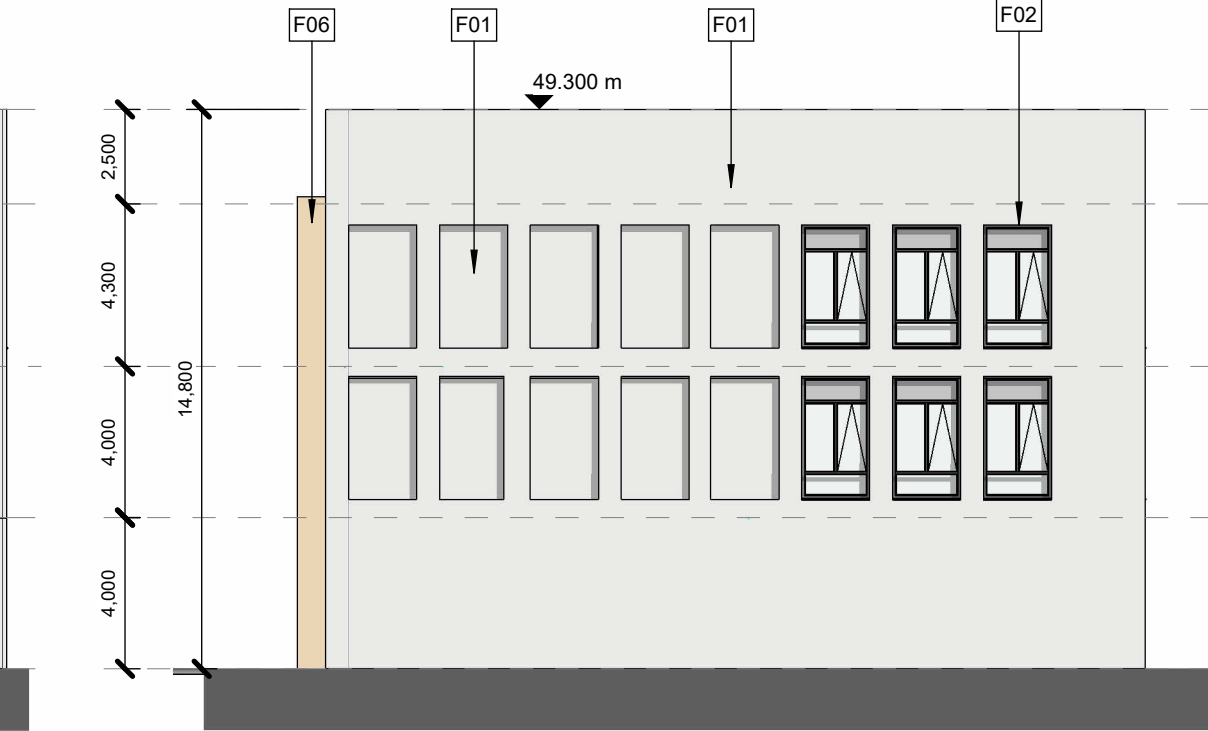
West Elevation
1 : 200



North Elevation
1 : 200



East Elevation
1 : 200



South Elevation
1 : 200

Notes:
 - Do not scale from this drawing. Use figured dimensions in all cases.
 - Verify dimensions on site and report any discrepancies to the Architect immediately.
 - This drawing to be read in conjunction with the Architects Specification.
 - © This drawing is copyright and may only be reproduced with the Architect's permission.

Material Legend

F01	Selected Coloured Render
F02	Selected Aluminium Windows/ Door Frames
F06	Selected Rough Hewn Stone
F07	Selected Honed Finished stone
F08	Selected Bronze Aluminium Panelling

P3-S-1	14.10.2024	SD	For Inclusion in Part 8 Application
P1-S-6	02.11.2023	SD	Issued for Information
P1-S-5	24.10.2023	SD	Issued for Information_Draft
P1-S-4	18.09.2023	SD	Issued for Information_Draft
P1-S-3	06.09.2023	SD	Issued for Information
P1-S-2	26.04.2023	SD	For Inclusion in Stage 01 Report
P1-S-1	24.02.2023	SD	Issued for Information
Rev.	Date	Drwn	Details of Issue / Revision



Douglas Business Centre,
 Carrigaline Rd,
 Douglas, Cork,
 T12 P088
 T: + 353 (0)21 436 2922
 W: www.reddyarchitecture.com
 E: info@reddyarchitecture.com

Client Details:
Kerry County Council

Project Details:
**Redevelopment, Áras Phádraig Site
 Lewis Road,
 Killarney,
 Co. Kerry**

Job No. P22-115C	Sheet Size: A3_Landscape	Scale@A3 1 : 200
Issue Date: 08/04/2024	Drawn By: B.McGrath	Reviewed By: S.Kearns

Drawing Title:
Theatre Elevations

Status P3	Purpose of Issue PLANNING PERMISSION
Project - System - Spatial Zone - Level - Type - Originator - Role - Number P22-115C-02-CB-XXX-DR-AU-AR-2000	
Revision P3-S-1	