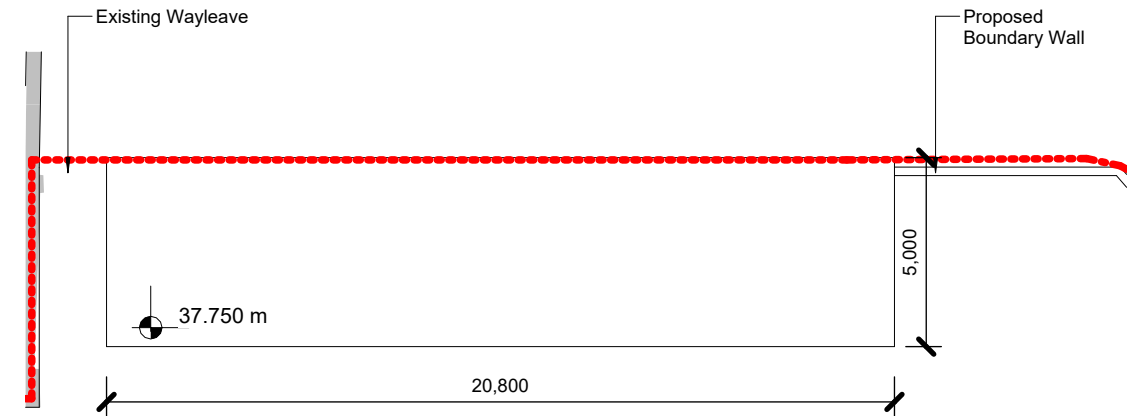
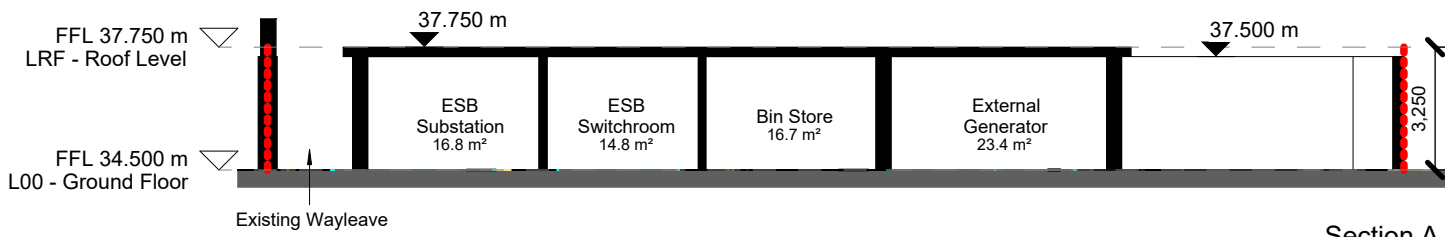


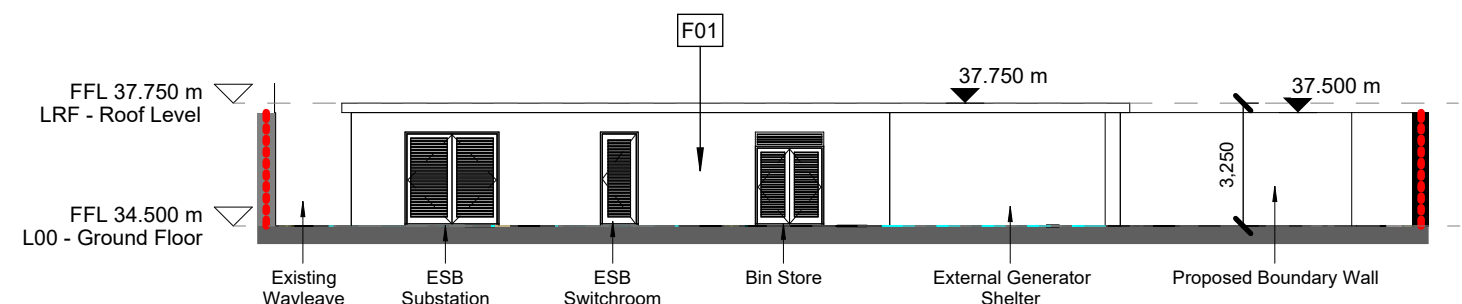
Services Building Floor Plan
1 : 200



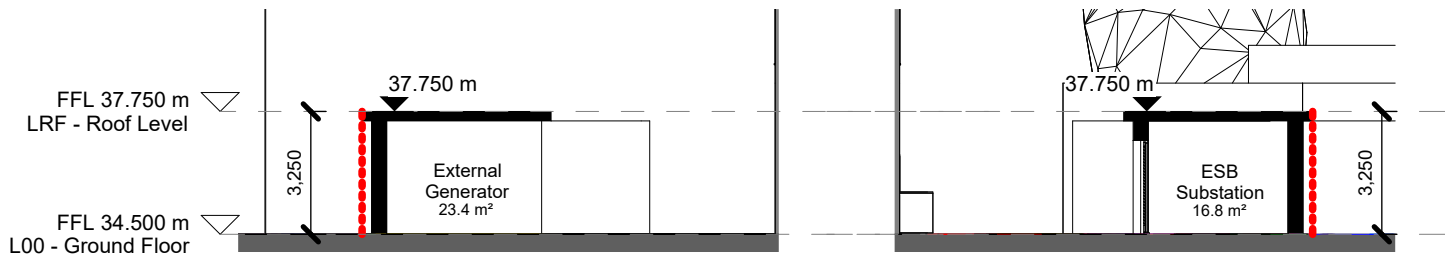
Services Building Roof Plan
1 : 200



Section A
1 : 200

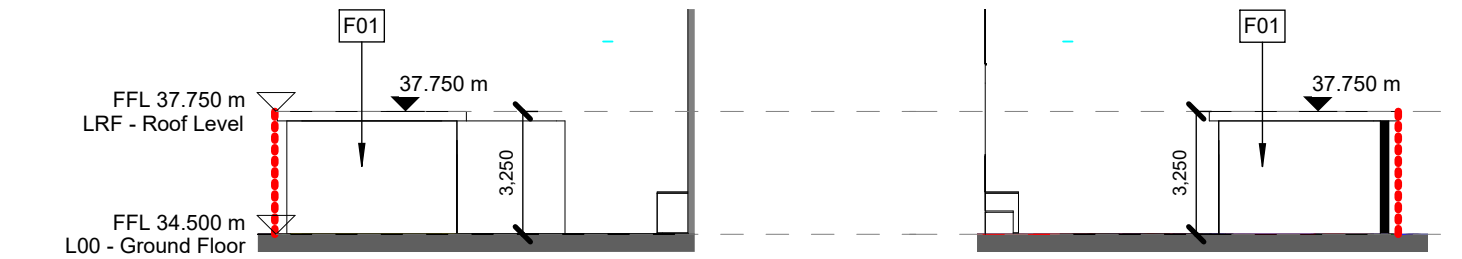


Services Building West Elevation
1 : 200



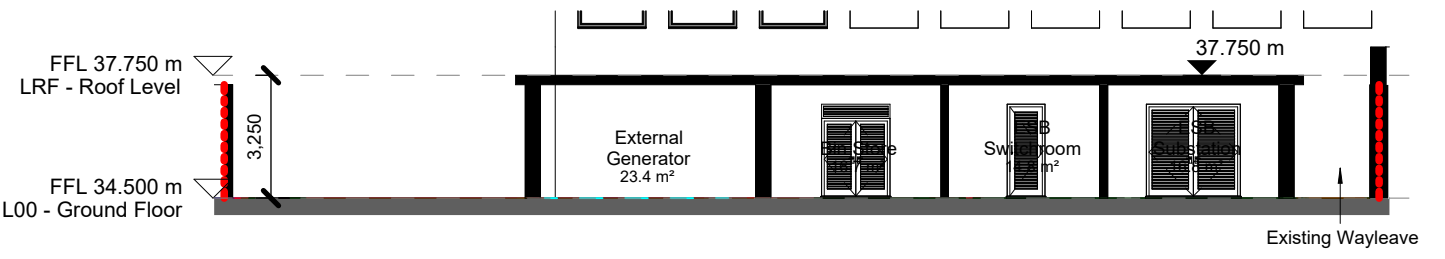
Section B
1 : 200

Section C
1 : 200

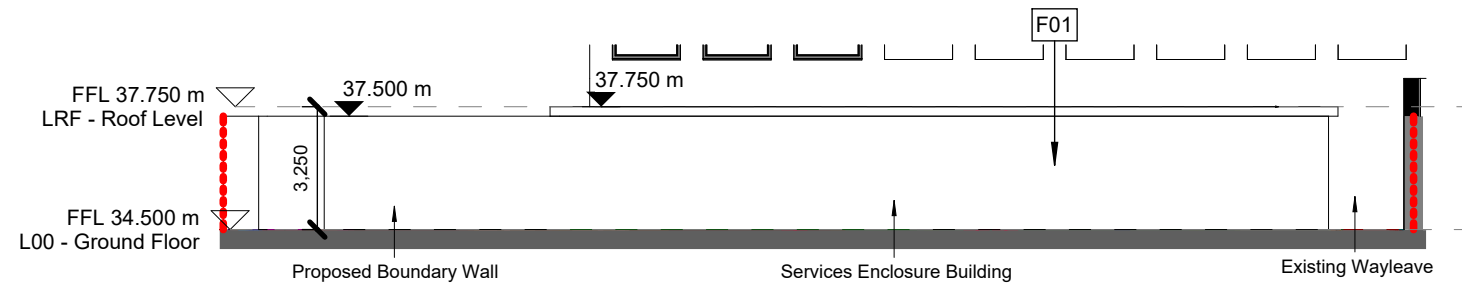


Services Building North Elevation
1 : 200

Services Building South Elevation
1 : 200

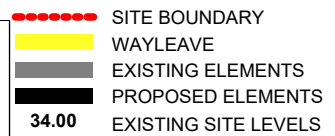


Section D
1 : 200



Services Building East Elevation
1 : 200

Notes:
 - Do not scale from this drawing. Use figured dimensions in all cases.
 - Verify dimensions on site and report any discrepancies to the Architect immediately.
 - This drawing is to be read in conjunction with the Architects Specification.
 - © This drawing is copyright and may only be reproduced with the Architect's permission.



Material Legend
 [F01] White Coloured Render



Project Details:
 Redevelopment, Áras Phádraig Site
 Lewis Road,
 Killarney,
 Co. Kerry

Drawing Title:
 Proposed Services Building

| | | | | |
|----------------------------|-----------------------------|----------------------|---------------------|--|
| Job No. P22-115C | Sheet Size: A3_Landscape | Scale @A3 1 : 200 | Status P3 | Purpose of Issue PLANNING PERMISSION |
|----------------------------|-----------------------------|----------------------|---------------------|--|

| | | | |
|--------|------------|------|-------------------------------------|
| P3-S-1 | 14.10.2024 | SD | For Inclusion in Part 8 Application |
| Rev. | Date | Drwn | Details of Issue / Revision |

Client Details:
 Kerry County Council

| | | |
|---------------------------|----------------------|--------------------------|
| Issue Date: 08/04/2023 | Drawn By: S.Dixey | Reviewed By: S.Kearns |
|---------------------------|----------------------|--------------------------|

Project - System - Spatial Zone - Level - Type - Originator - Role - Number
P22-115C-02-CB-L00-DR-RAU-AR-5001

Revision
P3-S-1