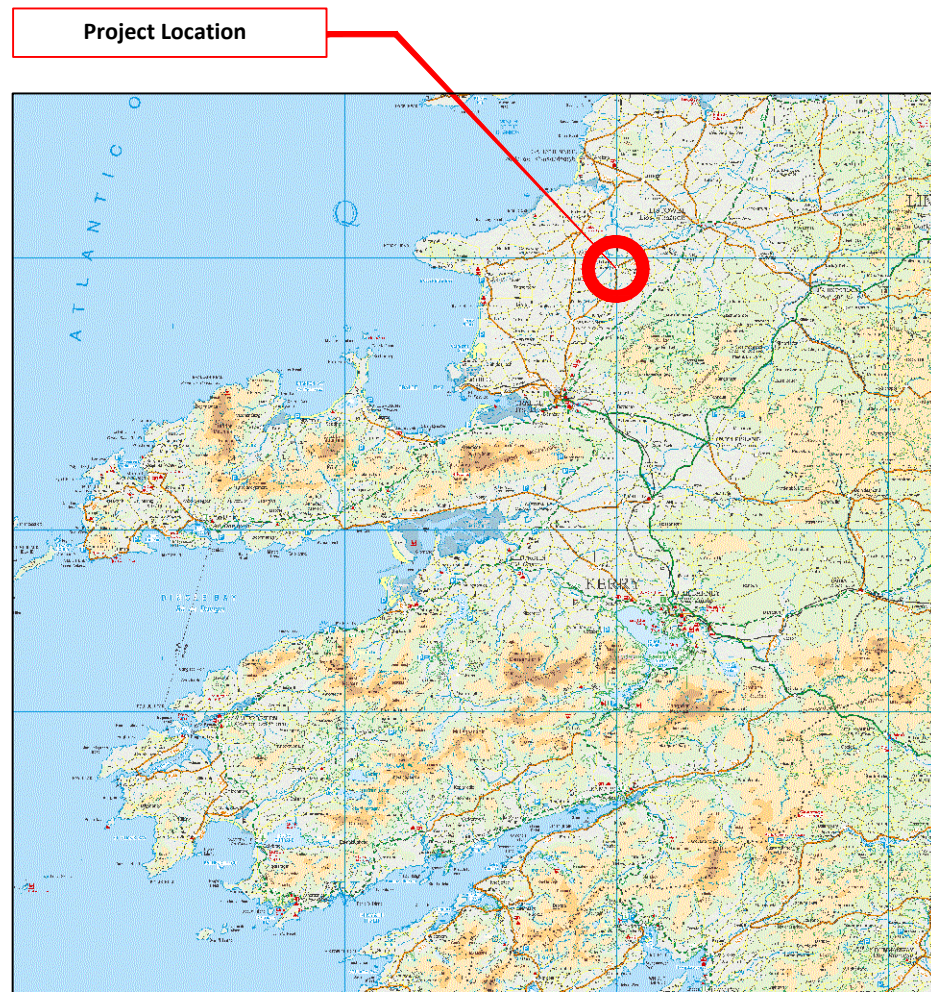
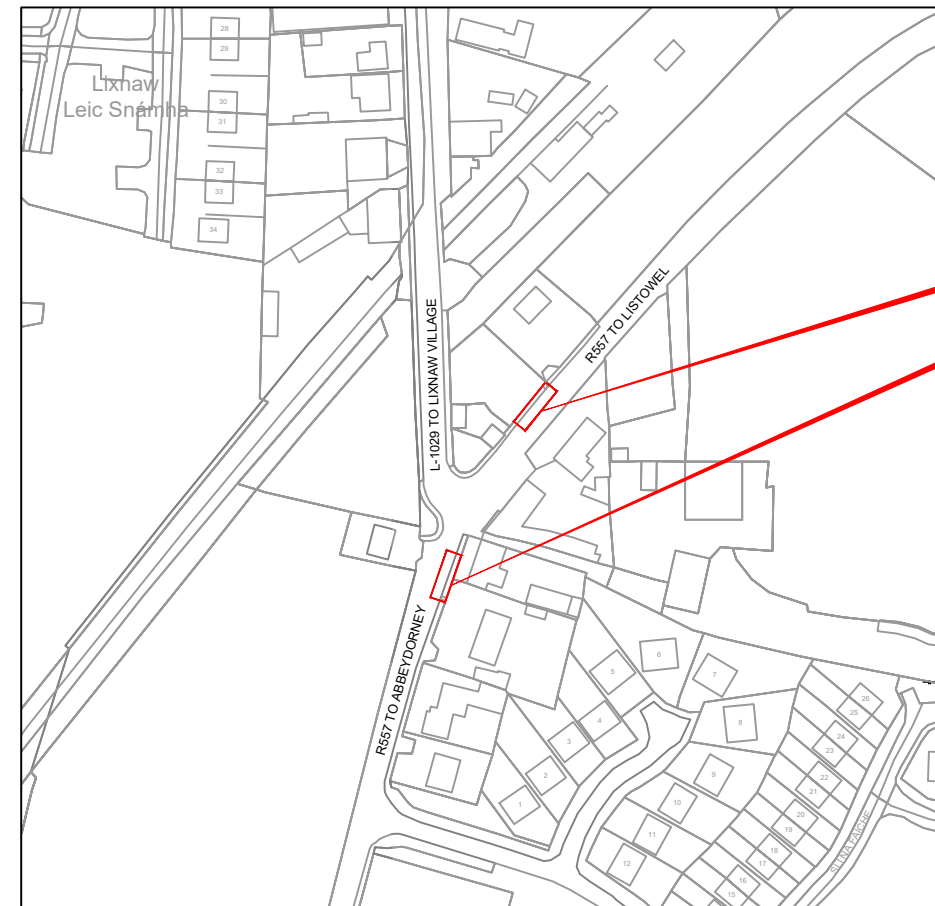


Kerry County Council Bus Stop Enhancement Programme Lixnaw R557 Bus Stops



NTS



Scale 1:1250

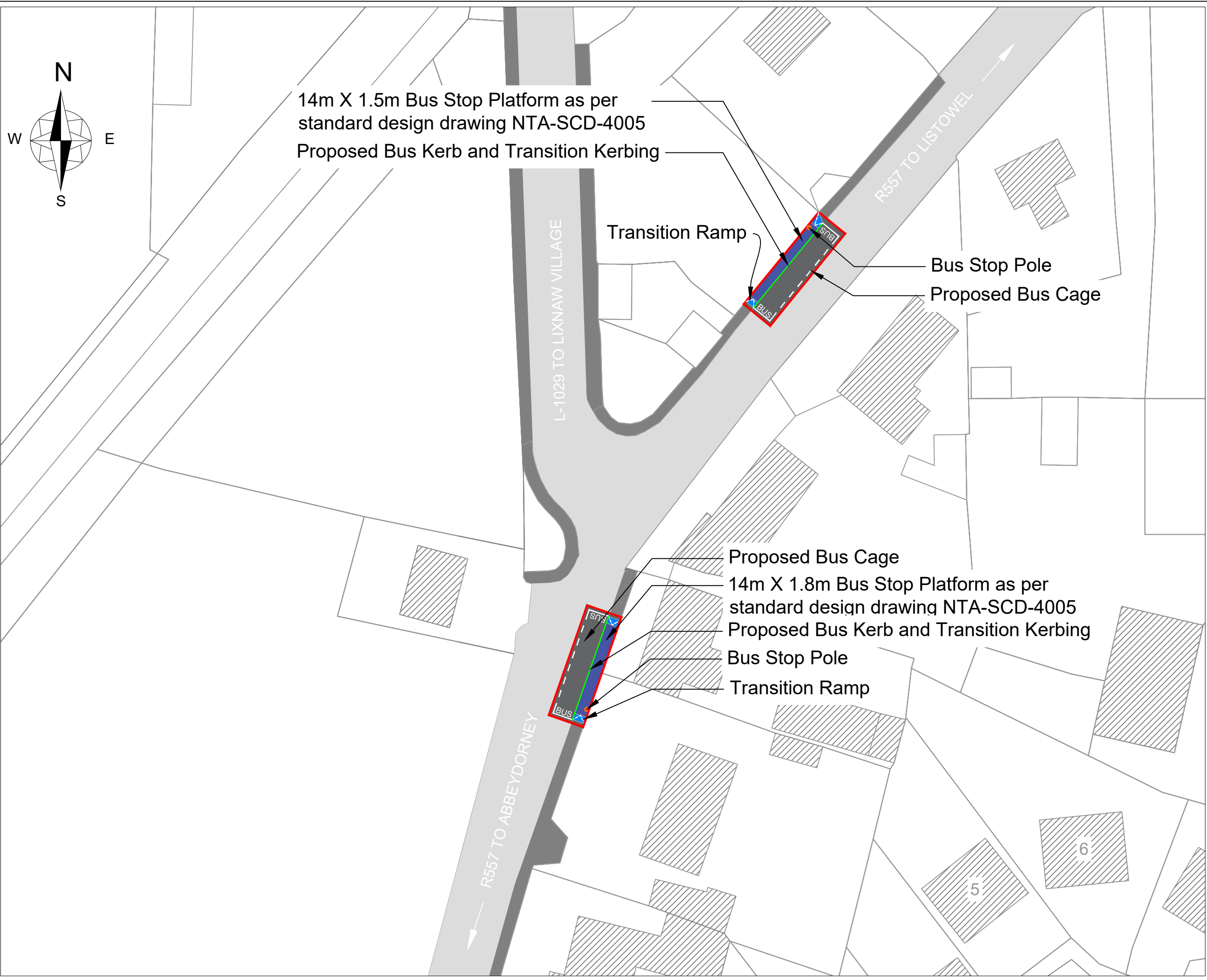


Comhairle Contae Chiarraí
Kerry County Council

Section 38 Drawings

Kerry County Council, Capital Delivery, Climate Resilience & Culture, CDU North, Princes Quay, Tralee Co. Kerry.

Telephone: (066) 7183585 E-Mail: cdunorth@kerrycoco.ie



14m X 1.5m Bus Stop Platform as per standard design drawing NTA-SCD-4005
Proposed Bus Kerb and Transition Kerbing

Transition Ramp

Bus Stop Pole
Proposed Bus Cage

Proposed Bus Cage
14m X 1.8m Bus Stop Platform as per standard design drawing NTA-SCD-4005
Proposed Bus Kerb and Transition Kerbing
Bus Stop Pole
Transition Ramp

THIS DRAWING AND CONTENTS ARE COPYRIGHT OF KERRY COUNTY COUNCIL.
NOTES:
(a) This Map is based on Irish Transverse Mercator (ITM) Coordinate System.
(b) All Altitudes indicated are in Metres, and are referred to Ordnance Datum, which is Mean Sea Level at Malin Head, Co. Donegal (1970 Adjustment).
(c) These Maps are used under The Licensing Agreement between the Ordnance Survey Ireland and the County and City Manager's Association (CCMA) for 1998 to 2001, and of the Copyright Act, 1963. Licence No: Kerry County Council CCMA 2014/19



Legend

Coordinates
52.401970, -9.616175
52.401353, -9.616645
Bus Stop Pole

Existing Road

Existing Footpath

Standard Bus Stop Design outlined in red as per Drawing NTA -SCD-4005



Transition & Bus Stop Kerbing

Rev	Drawing Issue and Revision Control	Issue	Drawn By	Checked By	Issue Date
01	Issued For Information	P I I A T C R	ADCo	J Fitz	12/1/26

P = Preliminary I = Information A = Approval T = Tender C = Contract R = Record

KERRY COUNTY COUNCIL
CAPITAL DELIVERY UNIT
PRINCES QUAY,
TRALEE,
CO. KERRY.
Ms. Bridget Fitzgerald,
Acting Director of Capital Delivery,
Climate Resilience & Culture Unit.

PROJECT NAME: LIXNAW BUS STOP ENHANCEMENTS PROJECT
R551 LIXNAW - LISTOWEL

TITLE: SECTION 38 GENERAL LAYOUT PLAN
STANDARD BUS STOP DESIGN

DRAWN: A/Co	CHECKED: J Fitzgerald	APPROVED: J Ahern
DATE: 12/01/2026	SCALE: 1:500	PROJECT NUMBER: LX SD 01
DRAWING NUMBER: KY CDU N LX BS 01		REV: 01

THIS DRAWING AND CONTENTS ARE COPYRIGHT OF KERRY COUNTY COUNCIL

NOTES:
 (a) This Map is based on Irish Transverse Mercator (ITM) Coordinate System.
 (b) All Altitudes indicated are in Metres, and are referred to Ordnance Datum, which is Mean Sea Level at Malin Head, Co. Donegal (1970 Adjustment).
 (c) These Maps are used under The Licensing Agreement between the Ordnance Survey Ireland and the County and City Manager's Association (CCMA) for 1998 to 2031, and of the Copyright Act, 1963. Licence No: Kerry County Council CCMA 2014/19

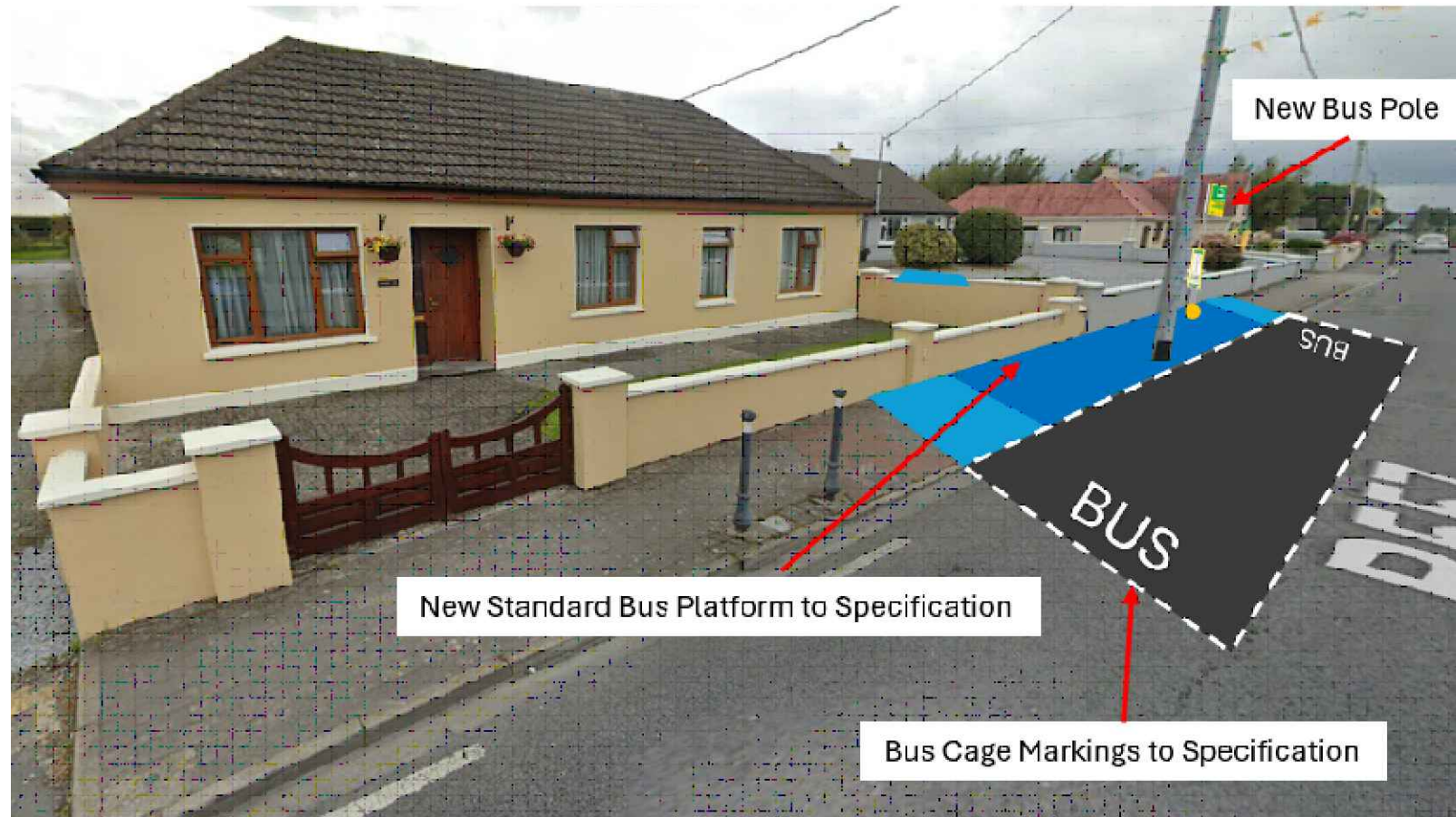


Legend

Coordinates
 52.401970, -9.616175
 52.401353, -9.616645

Bus Stop Pole

Standard Bus Stop Design outlined in red as per Drawing NTA -SCD-4005



Schematic Lixnaw Bus Stop Proposal R557 Westbound to Abbeydorney.



Schematic Lixnaw Bus Stop Proposal R557 Eastbound to Listowel.

Rev	Drawing Issue & Revision Control	Issue	Drawn By	Checked By	Issue Date
01	Issued For Information	P I A T C R	AOCO	J FIZ	12/1/26

P = Preliminary I = Information A = Approval T = Tender C = Contract R = Record

KERRY COUNTY COUNCIL
 CAPITAL DELIVERY UNIT
 PRINCES QUAY,
 TRALEE,
 CO. KERRY.

Ms. Bridgett Fitzgerald,
 Acting Director of Capital Delivery,
 Climate Resilience & Culture Unit.

PROJECT NAME: LIXNAW BUS STOP ENHANCEMENT PROJECT
 R-557 LIXNAW - LISTOWEL

TITLE: Image for Illustration Purposes
 Standard Bus Stop Design

DRAWN: AOCO	CHECKED: J Fitzgerald	APPROVED: J Ahern
DATE: 12/01/2026	SCALE: NTS @ A3	PROJECT NUMBER: CW LX 02
DRAWING NUMBER: KY CDU N LX BS 02		REV: 01